

FLOWLINX® ROLLERCLAMP



SET. CLAMP. ROLL.

The tube roller clamp is a versatile device designed to remove fluid from unreinforced tubing up to 80 durometer hardness (Shore A). It is available for use on four different tubing wall thicknesses and allows for efficient fluid evacuation and secure clamping to maintain back pressure up to 30 psi.

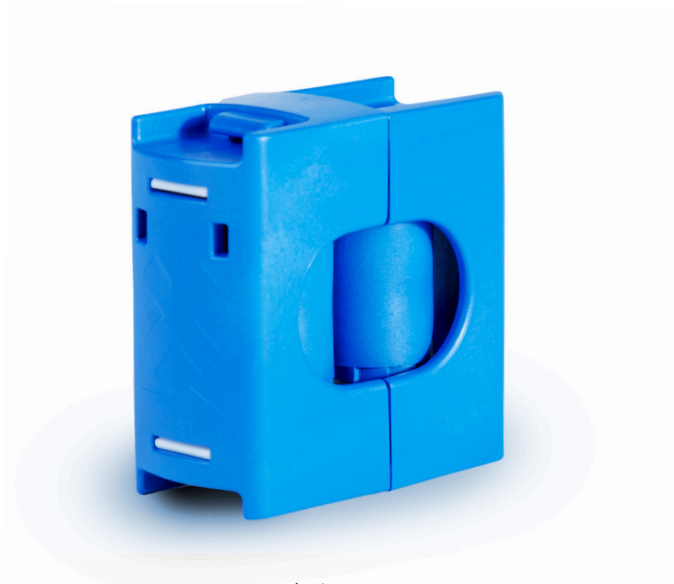
INCLUDED IN THE BOX:

SEPARATED TUBE ROLLERS

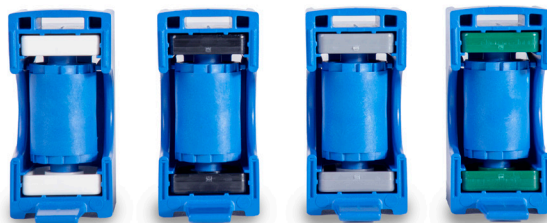
- ◆ The roller sizes included in this package are order dependent. Please refer to your order details for the exact sizes included.
- ◆ See color key section for corresponding tubing size.

COLOR KEY:

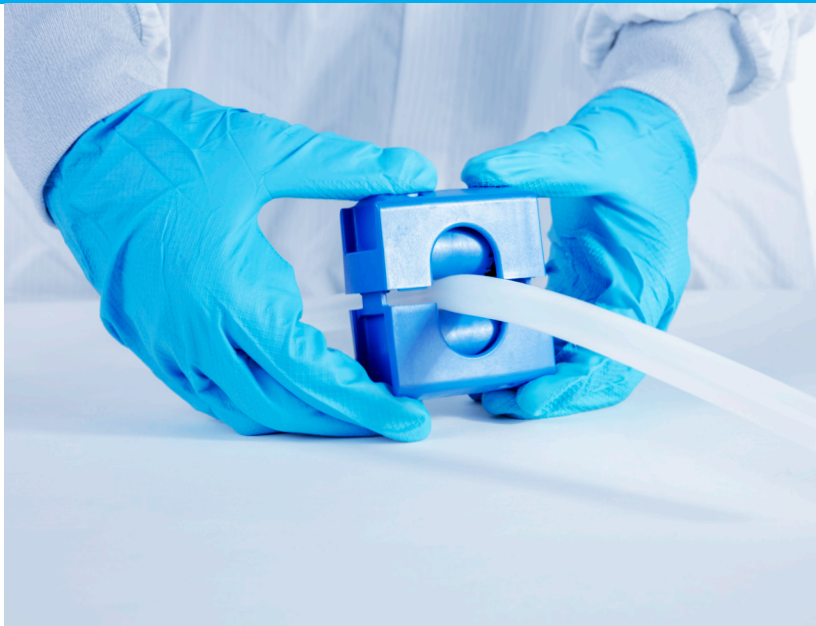
COLOR	WHITE	BLACK	GREY	GREEN
For Wall Thickness:	0.063"	0.093"	0.125"	0.188"



ROLLERCLAMP™
WHEN EVERY DROP MATTERS



FLOWLINX® ROLLERCLAMP



STEPS FOR OPERATION:

The tube roller clamp is a versatile device designed to remove fluid from unreinforced tubing up to 80 durometer hardness (Shore A). It is available for use on four different tubing wall thicknesses and allows for efficient fluid evacuation and secure clamping to maintain back pressure up to 30 psi.

- 1. Identify the Tubing:** Start by identifying the tubing that contains the fluid you want to evacuate. Ensure the tubing is compatible with the tube roller clamp (TRC) in terms of wall thickness. Refer to the Color Key for tubing wall thickness and TRC compatibility.
- 2. Find the Suitable Spot:** Find a spot on the tubing that is suitable for the clamp to be installed. This spot should be free of any obstructions or fittings that might interfere with the operation of the tube roller.
- 3. Prepare the Tube Roller Clamp:** Remove both halves of the TRC from the packaging. Make sure the arrows on the TRC are pointed in the direction of travel (direction fluid will be evacuated).
- 4. Install the Tube Roller Clamp:** Position the TRC onto the tubing at the identified spot.
- 5. Secure the Tube Roller Clamp:** Secure the TRC onto the tubing by squeezing the two halves together with the tubing in between the two rollers, latching both tabs into place. Verify that the TRC is securely attached to the tubing.
- 6. Evacuate the Fluid:** Pull the TRC along the tubing in the direction of the arrows. This action will squeeze the tubing and push the fluid out from the inside.
- 7. Use Additional Tube Roller Clamp, if Necessary:** If a fitting or obstruction is in the way, an additional TRC may be used to continue the evacuation of the liquid. Simply install the additional TRC after the obstruction and continue the process.

FLOWLINX® ROLLERCLAMP



TROUBLESHOOTING:

Fluid leakage: Check if the tubing is fully seated in the TRC and the tubing wall thickness is compatible with the TRC.

Difficulty in rolling: Ensure the tubing wall thickness is compatible with the TRC and that the roller mechanism is free and clear of obstructions.

Clamp slips: Inspect the locking mechanism and ensure the TRC is securely coupled.

SUPPORT:

For customer support or assistance, please contact our team at customerservice@carolinaflow.com